

Dore Guitar Stars

The Newsletter of Dore School Guitar Students



The First Term is Nearly Over BUT!

How have our seasoned guitarists coped after the Summer holiday? Have our new starters taken to their instruments?

Dear Parents, Carers and guitarists. Can I firstly say, I hoped you all enjoyed the Summer and feel refreshed for another school year. I was raring to go in September waiting to see if our guitarist were still rockin'. Well it looks as though they were. After a slow start the first week I have been amazed at the way my guitar stars have taken to playing chords. We have now got G, A, A-, E, E-, D, C (the really hard one) and F (the even harder one). What we are aiming to do, for the next couple of terms, is get our speed up when changing

1

BE RESPECTFUL

Listen to your groups comments and don't shout out. A hand in the air gets things done.

2

PRACTICE

Short but often practice. When you get home, take your guitar out of its case.

3

LISTEN TO MUSIC

Musicians need to listen to music. It's what makes us amazing.

Music Link Leader

I am pleased to announce that I am now the Music Link Leader who liaises between Sheffield Music Hub and our school. I have taken over from Celia, who has reluctantly had to give up the role due to a huge increase in her teaching. I would urge parents, who have any concerns or just want to chat about the music lessons given by Hub staff, to contact me on the mobile number or email given below.



chords; composing our own songs with the chords we already know and explore the possibilities of making music from the influences around us, whether that be the sounds we hear in nature or the playground etc.

We are also going to increase the number of chords we can play by adding 'new flavoured' chords like dominant and major/minor 7. From what I've seen and heard over the last five weeks I think we are going to have some of the best guitarists Dore Juniors has seen. Amazing!

New Starters Shock!

Mr T's new starters are amazing listeners.

Well I have to say that I was very pleased to see so many new starters on my list this year. What a great mixture of boys and girls with a very colourful mixture of guitars to boot. Our new guitarists are learning the basics of musical notation such as the names of the notes on the staff which use the rhyme: Every Green Bus Drives Fast for the five lines (starting at the bottom line) and FACE for the spaces (starting in the bottom space). All my new starters can



now play the notes E, F and G on the first string and have learnt the duration of a crotchet (1 count) and a minim (2 counts). I am keen for the children to practice at home for 3-5 minutes at regular intervals rather than try and do one 30 minute practice. Short but often works so much better.

“This year we are going to have some of the best guitarists Dore Juniors has seen”

PARENTS AND CARERS CORNER.

Waiting lists and New Starters in January

Can I say a big thank you to parents for being so patient regarding their children starting guitar lessons at Dore. The office has shown me the list and it contains about 15 children made up of Y2s and Y3s. What I have always stipulated is that Y2s are too young (in my opinion) to take on board some of the physical requirements of playing guitar and I would feel uncomfortable having parents pay for lessons that wouldn't really benefit their children. However! Y2s on my list will have priority when they become Y3s, so hopefully that helps. As for the Y3s on my list, I have spoken to the office and they can all start guitar in January.





DORE GUITAR STARS



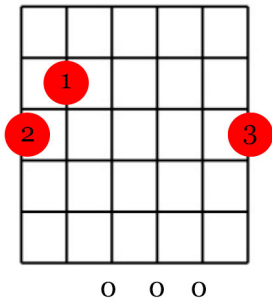
☎ 07815 003626

✉ iain.teather@sheffield.gov.uk

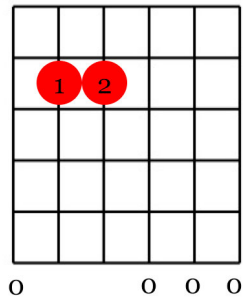
HANDOUTS

OUR CHORDS

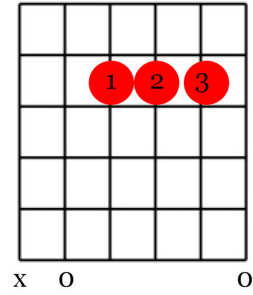
G Major



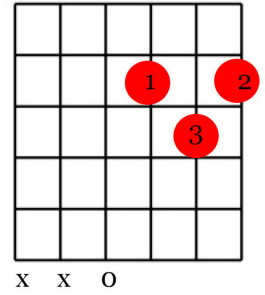
E- (min)



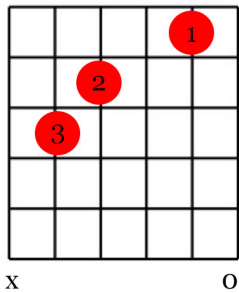
A Major



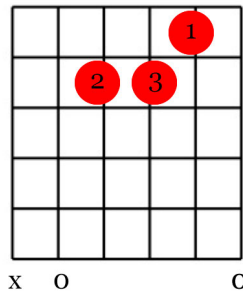
D Major



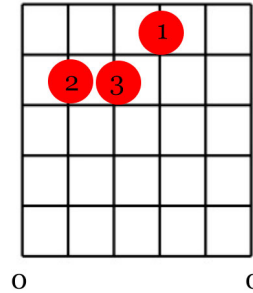
C Major



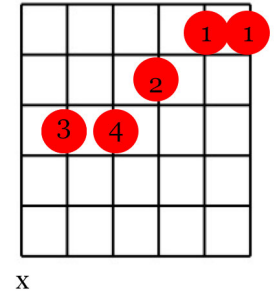
A- (min)

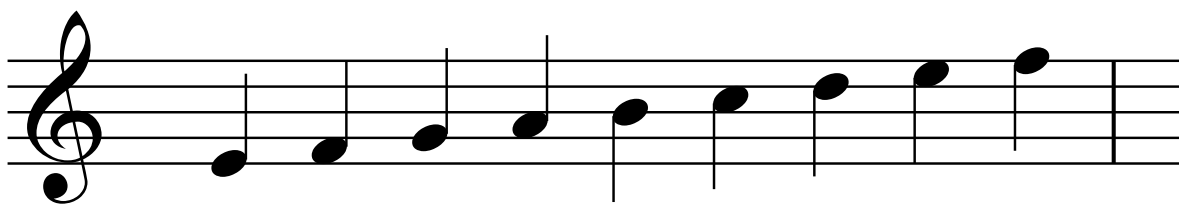


E Major



F Major





E F G A B C D E F



F A C E

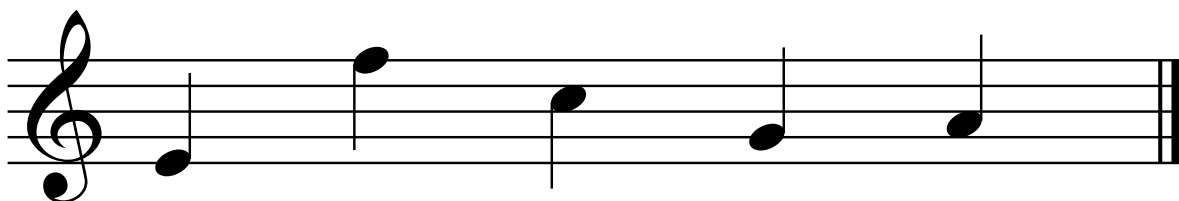


E G B D F

Every Green Bus Drives Fast

WHAT ARE THESE NOTES CALLED?

Write the names above the note.



Guitar

ex 1.

ex 2.

1
2
3
4
5
6

T
A
B

2 2 0 1 0 2 1 0 2 3 0 2

Gtr.

ex 3.

5

T
A
B

0 0 3 0 2 3 0 2 0 1 1 0 2 0 3 2 0 3

These are 6 TAB lines representing 6 strings on the guitar. The 1st string is the thinnest, and the 6th strings the thickest.

When a number is placed on one of the lines, it indicates the fret location. [example 1.]

This means to play the 2nd fret on the 3rd string.

[example 2.] Practice playing through this little piece using PLECTRUM and using DOWNSTROKES.

[example 3.] Is the MAJOR SCALE OF C or The C major scale.

Practice EX 1 and 2. So you can see how TAB works. Remember to use PLECTRUM and DOWNSTROKES.

NOTATED FRETBOARD CHART

