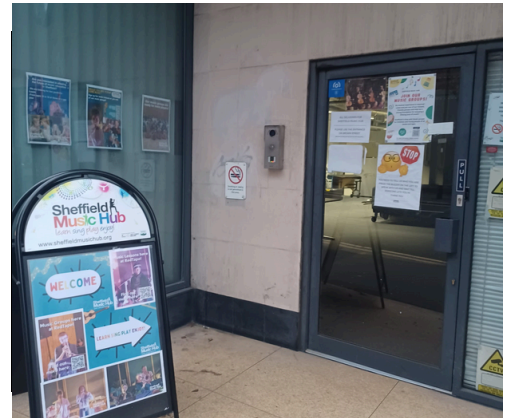


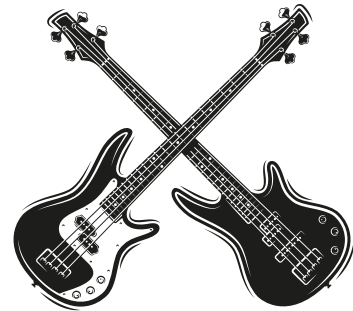
Welcome to Electric and Steel String Guitars Rehearsals



Arrive from 5:15pm at this entrance and press the buzzer (There will be a Music Hub sign and sticker)– Someone will let you into the building and show you where to go next!



Rehearsal will start at 5:30pm and Conor will get everyone started. Usually this will start with a warm up!



We will then learn the songs that we plan to perform at our various concerts or practice what we already know to get us playing as best as we can!



Around halfway through the rehearsal you will get a 5 minute break so you can use the toilet and have a snack before we carry on.



**We finish at 6:30pm and Conor will lead us back to the entrance to get picked up!
Hopefully we will see you again the following week!**

Goodbye